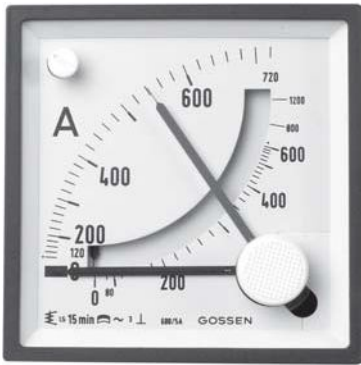


# Basic Series • Square Panel Meters

## For Alternating Current



MEQB 96

**Moving-iron bimetal movement, 90° scale white, imprint black**  
**Narrow front frame matt black per DIN 43 718, anti-glare glass**

Front Dimensions mm		72 x 72	96 x 96
Type		MEQB 72	MEQB 96
Scale Length mm	Moving-Iron Movement	63	97
	Bimetal-Movement	42	72
Accuracy Class	Moving-Iron / Bimetal Movement	1.5 / 3	1.5 / 3
Max. Weight (standard model)		0.2 kg	0.29 kg
Max. Operating Voltage		600 V	600 V
Test Voltage		5.8 kV	5.8 kV
Front Housing-Panel Protection		IP 52	IP 52

### Description

Analog Panel Meter with Moving-Iron and Bimetal Movements

### Display

Scale Division      Coarse-fine

Pointer                Beam pointer with knife-edge  
 Red slave pointer for display of maximum value  
 Reset button for slave pointer can be locked

### Mechanical Design

Housing Material    Polycarbonate, self-extinguishing and drip-proof per UL94V-0

Mounting Fasteners   Screw Clamp

Scale                    Interchangeable scales  
 ⇒ Scales may only be replaced under voltage-free conditions!

Replaceable           Front frames and glass windows  
 ⇒ May only be replaced under voltage-free conditions!

Terminals              M4 screw terminals with self lifting terminal clips.  
 Screws can be turned with cross-head or standard screw drivers.

Contact Protection   Finger-safe terminal cover included

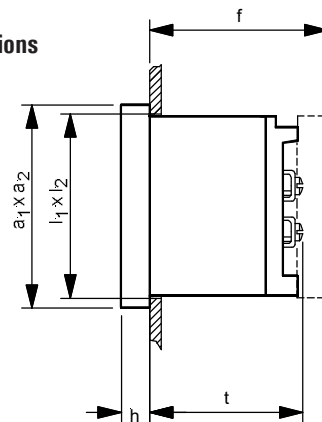
### Power Consumption

Connection	Measuring input		Power Consumption
to transformer	Current	sec.: 1 A or 5 A	approx. 2.6 VA

### Reference Conditions

Reference Quantities	Reference Conditions
Ambient Temperature	23°C ± 2°C
Position of Use	control panel vertical ± 1°
Other	DIN EN 60051

### Basic Dimensions



Front in mm	Nominal Dimensions		Cutout Dimensions, mm $l_1 \times l_2$	Installation Depth Including Terminals (t), mmM4	Installation Depth Including Full Cover (f), mm
	$a_1 \times a_2$	h			
72 x 72	72 x 72	5.5	$68^{+0.7} \times 68^{+0.7}$	53	66
96 x 96	96 x 96	5.5	$92^{+0.8} \times 92^{+0.8}$	53	66

## Basic Series • Square Panel Meters

For Alternating Current



Moving-iron bimetal movement, 90° scale white, imprint black  
Narrow front frame matt black per DIN 43 718, anti-glare glass

Range	Scale <sup>1)</sup>	Type Order No.	MEQB 72 ↓	MEQB 96 ↓
5 / 6 A, 8 or 15 min.	0 – 50 / 60 A			
5 / 6 A, 8 or 15 min.	0 – 60 / 72 A			
5 / 6 A, 8 or 15 min.	0 – 100 / 120 A			
5 / 6 A, 8 or 15 min.	0 – 150 / 180 A			
5 / 6 A, 8 or 15 min.	0 – 200 / 240 A			
5 / 6 A, 8 or 15 min.	0 – 250 / 300 A			
5 / 6 A, 8 or 15 min.	0 – 400 / 480 A			
5 / 6 A, 8 or 15 min.	0 – 600 / 720 A			
5 / 6 A, 8 or 15 min.	0 – 800 / 960 A			
5 / 6 A, 8 or 15 min.	0 – 1000 / 1200 A			
5 / 6 A, 8 or 15 min.	0 – 1200 / 1440 A			
5 / 6 A, 8 or 15 min.	0 – 1500 / 1800 A			
1 / 1.2 A, 8 or 15 min.	0 – 100 / 120 A			
1 / 1.2 A, 8 or 15 min.	0 – 150 / 180 A			
1 / 1.2 A, 8 or 15 min.	0 – 200 / 240 A			
1 / 1.2 A, 8 or 15 min.	0 – 250 / 300 A			
1 / 1.2 A, 8 or 15 min.	0 – 400 / 480 A			
1 / 1.2 A, 8 or 15 min.	0 – 600 / 720 A			
1 / 1.2 A, 8 or 15 min.	0 – 1000 / 1200 A			

All panel meters available with the following configurations:  
Front Dimensions: 72 x 72, 96 x 96  
Connected to 1 / 1.2 A or 5 / 6 A transformer  
Response Time: 8 min. or 15 min.  
Scale as requested

**Please note ordering example below:**

1) Specify unlieste scales in clear text

### Ordering Example:

Type <b>MEQB 72</b>	Text for purchase order <b>Range 5 / 6 A, Scale 0 – 800 / 960 A, 15 min.</b>
------------------------	---