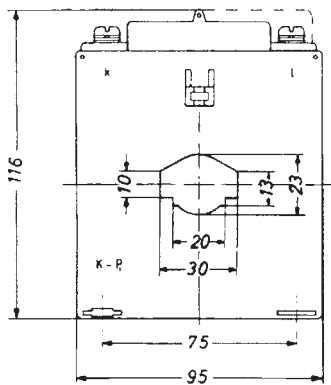
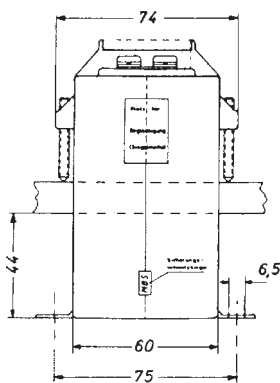




ASK 31.6

Plug-in current transformer



Primary conductor	30 x 10 mm 20 x 13 mm
Round conductor	Ø 23 mm
Transformer width	95 mm
Snap-on mounting	—
Sealed shutter	Art.-no. 59044 see page 205
Protection plug-in current transformer	see page 128
Current transformer for tariff applications	see page 172

Secondary current		5A		1A	
Primary current A	Burden VA	Accuracy class		Accuracy class	
		1	0.5	1	0.5
		Art.-no.	Art.-no.	Art.-no.	Art.-no.
30	1.5	10054		10254	
40	1.5	10056		10256	
	2.5	10057		10257	
	1.5		10011		10211
50	2.5	10058	10012	10258	10212
	1.5		10013		10213
60	2.5	10059	10014	10259	10214
	5	10060		10260	
	2.5	10061	10015	10261	10215
75	5	10062	10016	10262	10216
	2.5	10063	10017	10263	10217
	5	10064	10018	10264	10218
80	10	10065		10265	
	2.5	10066	10019	10266	10219
	5	10067	10020	10267	10220
100	10	10068	10021	10268	10221
	15	10069		10269	
	2.5		10022		10222
	5	10070	10023	10270	10223
150	10	10071	10024	10271	10224
	15	10072	10025	10272	10225
	2.5		10026		10226
	5	10073	10027	10273	10227
200	10	10074	10028	10274	10228
	15	10075	10029	10275	10229
	2.5		10030		10230
250	5	10076	10031	10276	10231
	10	10077	10032	10277	10232
	15	10078	10033	10278	10233
300	5	10079	10034	10279	10234
	10	10080	10035	10280	10235
	15	10081	10036	10281	10236
400	5	10082	10038	10282	10238
	10	10083	10039	10283	10239
	15	10084	10040	10284	10240
500	5	10085	10042	10285	10242
	10	10086	10043	10286	10243
	15	10087	10044	10287	10244
600	5	10088	10046	10288	10246
	10	10089	10047	10289	10247
	15	10090	10048	10290	10248
750	5	10091	10050	10291	10250
	10	10092	10051	10292	10251
	15	10093	10052	10293	10252