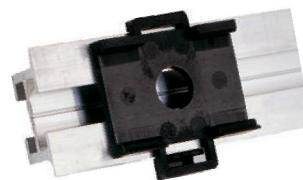
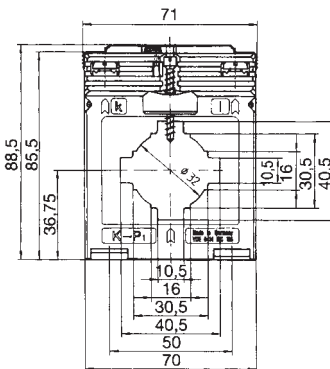
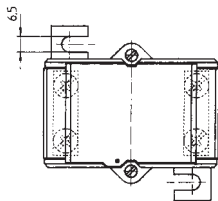
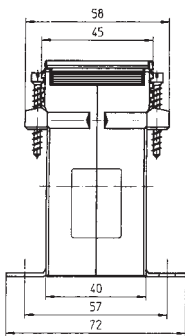




# SASK 41.4

Protection plug-in current transformer

Secondary current		5A		1A	
Primary current A	Burden VA	Protection class		Protection class	
		5P5	10P5	5P5	10P5
		Art.-no.	Art.-no.	Art.-no.	Art.-no.
120	1	S24-1406B	S24-1407B	S24-1416B	S24-1417B
125	1	S24-1506B	S24-1507B	S24-1516B	S24-1517B
150	1	S24-1606B	S24-1607B	S24-1616C	S24-1617C
	1.5		S24-1607C		
200	1.5	S24-1706C	S24-1707C	S24-1716C	S24-1717C
250	1.5	S24-1806C	S24-1807C	S24-1816C	S24-1817C
	2.5		S24-1807D		
300	1.5	S24-1906C	S24-1907C	S24-1916C	S24-1917C
	2.5	S24-1906D	S24-1907D	S24-1916D	S24-1917D
400	1.5	S24-2006C	S24-2007C	S24-2016C	S24-2017C
	2.5	S24-2006D	S24-2007D	S24-2016D	S24-2017D
500	1.5	S24-2106C	S24-2107C	S24-2116C	S24-2117C
	2.5			S24-2116D	S24-2117D
600	1.5	S24-2206C	S24-2207C	S24-2216C	S24-2217C
	2.5			S24-2216D	S24-2217D
750	1.5	S24-2306C	S24-2307C	S24-2316C	S24-2317C
	2.5		S24-2307D	S24-2316D	S24-2317D



Snap-on mounting

Primary conductor	40 x 10 mm
Round conductor	2 x 30 x 5 mm
Round conductor	Ø 32 mm
Transformer width	71 mm
Snap-on mounting	<b>Art.-no. 55012</b> see page 204
Sealed shutter	<b>Art.-no. 59041</b> see page 205
Current transformer for industrial applications	see page 56
Current transformer for tariff applications	see page 174