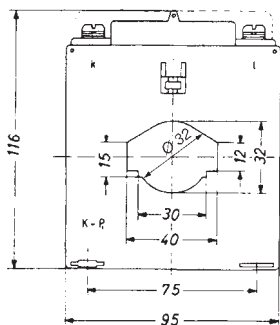
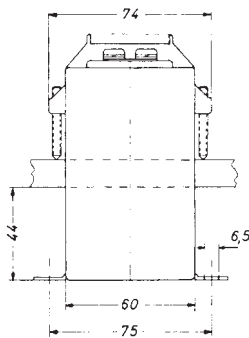




SASK 41.6

Protection plug-in current transformer



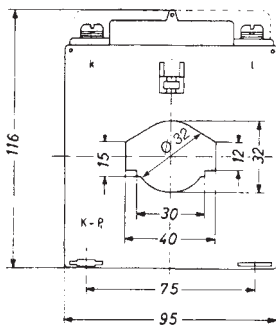
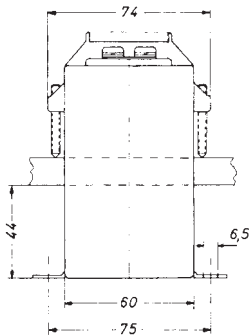
Secondary current		5A			
Primary current A	Burden VA	Protection class			
		5P5 Art.-no.	10P5 Art.-no.	5P10 Art.-no.	10P10 Art.-no.
100	1.5	S30-1306C	S30-1307C	S30-1308C	S30-1309C
	2.5	S30-1306D	S30-1307D		
150	2.5	S30-1606D	S30-1607D	S30-1608D	S30-1609D
	5	S30-1606F	S30-1607F		
200	2.5	S30-1706D	S30-1707D	S30-1708D	S30-1709D
	5	S30-1706F	S30-1707F		
	7.5	S30-1706G	S30-1707G		
	10		S30-1707H		
250	2.5	S30-1806D	S30-1807D	S30-1808D	S30-1809D
	5	S30-1806F	S30-1807F		S30-1809F
	7.5	S30-1806G	S30-1807G		
	10	S30-1806H	S30-1807H		
300	2.5	S30-1906D	S30-1907D	S30-1908D	S30-1909D
	5	S30-1906F	S30-1907F	S30-1908F	S30-1909F
	7.5	S30-1906G	S30-1907G		
	10	S30-1906H	S30-1907H		
400	2.5	S30-2006D	S30-2007D	S30-2008D	S30-2009D
	5	S30-2006F	S30-2007F	S30-2008F	S30-2009F
	7.5	S30-2006G	S30-2007G	S30-2008G	S30-2009G
	10	S30-2006H	S30-2007H		
500	2.5	S30-2106D	S30-2107D	S30-2108D	S30-2109D
	5	S30-2106F	S30-2107F	S30-2108F	S30-2109F
	7.5	S30-2106G	S30-2107G	S30-2108G	S30-2109G
	10	S30-2106H	S30-2107H	S30-2108H	S30-2109H
600	2.5	S30-2206D	S30-2207D	S30-2208D	S30-2209D
	5	S30-2206F	S30-2207F	S30-2208F	S30-2209F
	7.5	S30-2206G	S30-2207G	S30-2208G	S30-2209G
	10	S30-2206H	S30-2207H		

Primary conductor	40 x 12 mm 30 x 15 mm
Round conductor	Ø 32 mm
Transformer width	95 mm
Snap-on mounting	—
Sealed shutter	Art.-no. 59044 see page 205
Current transformer for industrial applications	see page 61
Current transformer for tariff applications	see page 176



SASK 41.6

Protection plug-in current transformer



Secondary current		1A			
Primary current A	Burden VA	Protection class			
		5P5 Art.-no.	10P5 Art.-no.	5P10 Art.-no.	10P10 Art.-no.
100	1.5	S30-1316C	S30-1317C	S30-1318C	S30-1319C
	2.5	S30-1316D	S30-1317D		
150	2.5	S30-1616D	S30-1617D	S30-1618D	S30-1619D
	5	S30-1616F	S30-1617F		
	7.5		S30-1617G		
200	2.5	S30-1716D	S30-1717D	S30-1718D	S30-1719D
	5	S30-1716F	S30-1717F		
	7.5	S30-1716G	S30-1717G		
	10		S30-1717H		
250	2.5	S30-1816D	S30-1817D	S30-1818D	S30-1819D
	5	S30-1816F	S30-1817F	S30-1818F	S30-1819F
	7.5	S30-1816G	S30-1817G		
	10	S30-1816H	S30-1817H		
300	2.5	S30-1916D	S30-1917D	S30-1918D	S30-1919D
	5	S30-1916F	S30-1917F	S30-1918F	S30-1919F
	7.5	S30-1916G	S30-1917G		
	10	S30-1916H	S30-1917H		
400	2.5	S30-2016D	S30-2017D	S30-2018D	S30-2019D
	5	S30-2016F	S30-2017F	S30-2018F	S30-2019F
	7.5	S30-2016G	S30-2017G	S30-2018G	S30-2019G
	10	S30-2016H	S30-2017H		
500	2.5	S30-2116D	S30-2117D	S30-2118D	S30-2119D
	5	S30-2116F	S30-2117F	S30-2118F	S30-2119F
	7.5	S30-2116G	S30-2117G	S30-2118G	S30-2119G
	10	S30-2116H	S30-2117H	S30-2118H	S30-2119H
600	2.5	S30-2216D	S30-2217D	S30-2218D	S30-2219D
	5	S30-2216F	S30-2217F	S30-2218F	S30-2219F
	7.5	S30-2216G	S30-2217G	S30-2218G	S30-2219G
	10	S30-2216H	S30-2217H		

Primary conductor	40 x 12 mm 30 x 15 mm
Round conductor	Ø 32 mm
Transformer width	95 mm
Snap-on mounting	—
Sealed shutter	Art.-no. 59044 see page 205
Current transformer for industrial applications	see page 61
Current transformer for tariff applications	see page 176